

AZIMUT

SEADECK 6

PRELIMINARY PROJECT PRESENTATION

INDEX

01	THE DESIGN & LIFESTYLE ON BOARD	P04
02	HER MAIN TECHNICAL FEATURES	P20
03	SEADECK 6 SPEC SHEET	P32



A one-of-a-kind beauty, enrapturing, that steals your breath away, leaving you speechless. An extraordinary idea as the only possible pathway, to get to where you want, to explore, to go beyond.

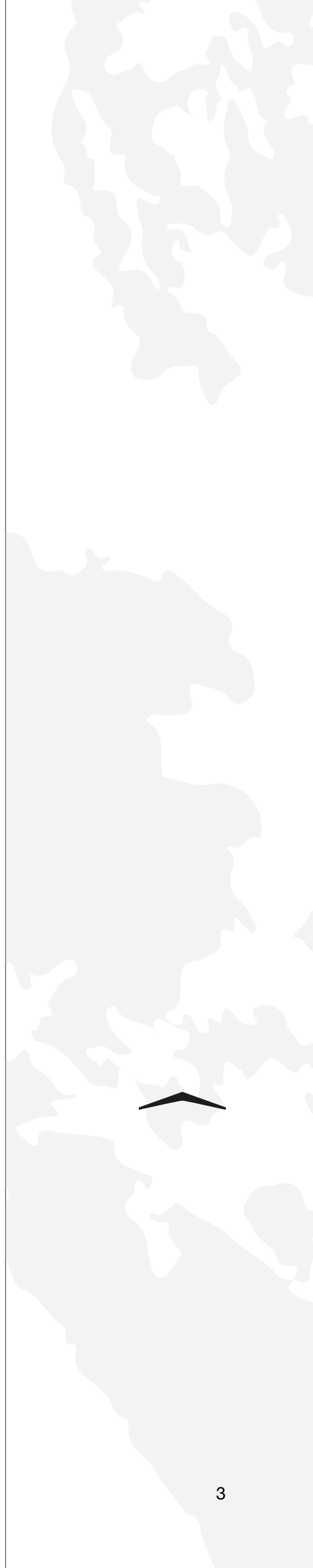
The freedom of embracing the unknown, that you know you'll love as a part of your very own story. A thought that provokes your mind and then inspires you to aim for the impossible, making mistakes, yet being brave.


A magic je ne sais quoi that enchants and intrigues you, moving you to feel more and to sense uniqueness.

The choice to risk it all, the one that makes you go for it, to impress yourself and all those who are worth it.

Welcome to Azimut.

AZIMUT.
DARE TO AMAZE.





01

THE DESIGN & LIFESTYLE ON BOARD



[DISCOVER MORE](#)



















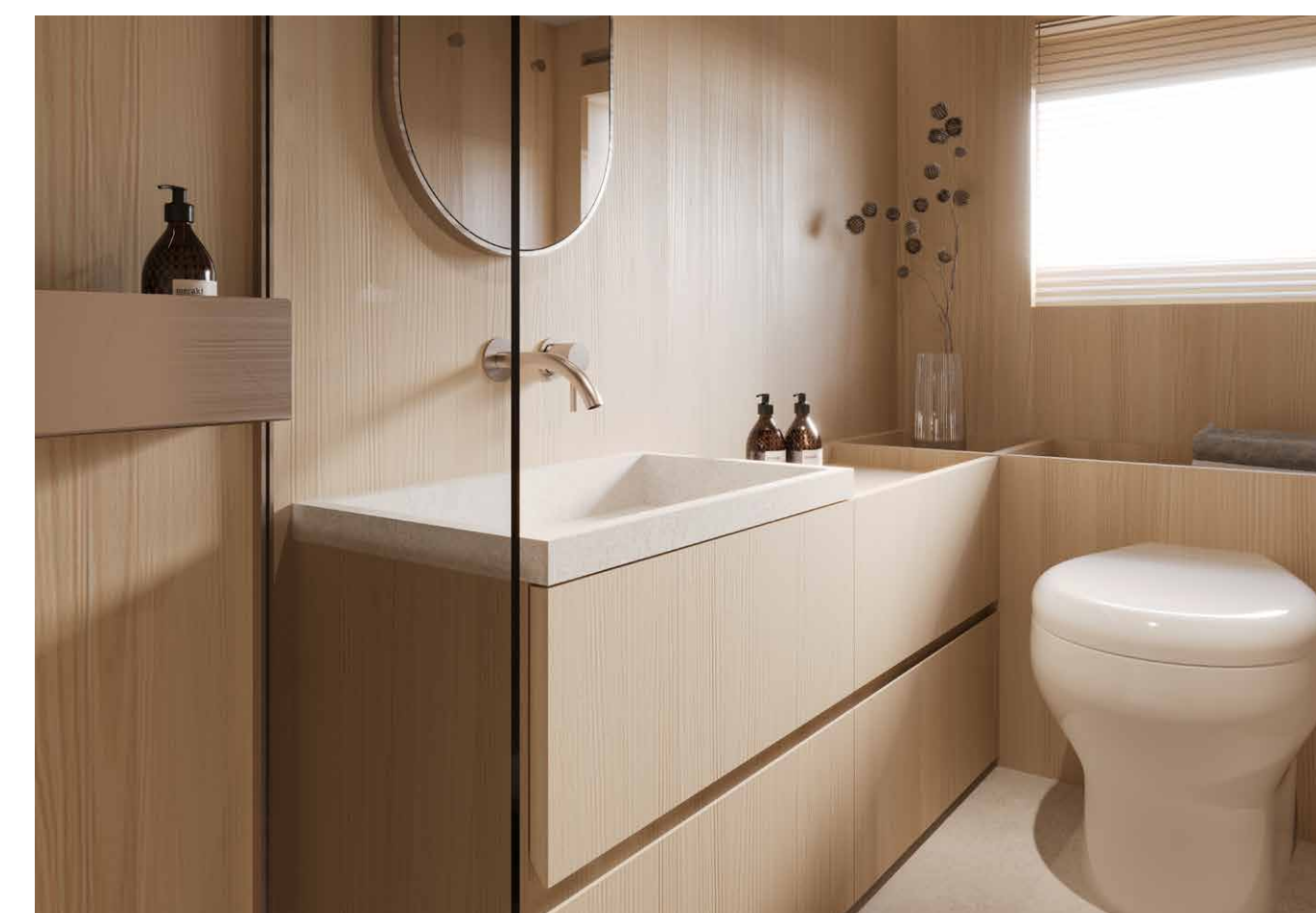
Welcome aboard, ladies and gentlemen.

Let us begin the tour.













02

HER MAIN TECHNICAL FEATURES

The beauty of the Seadeck 6 is not solely a matter of exterior and interior design elements that combine to perfectly play out Azimut's essence. Her beauty is also about discovering the technological advancements and special components that contribute to making her truly unique and highly innovative.



HYBRID PROPULSION

Seadeck is the first family yacht series in the world to be equipped with Volvo's new hybrid-electric pod propulsion system.

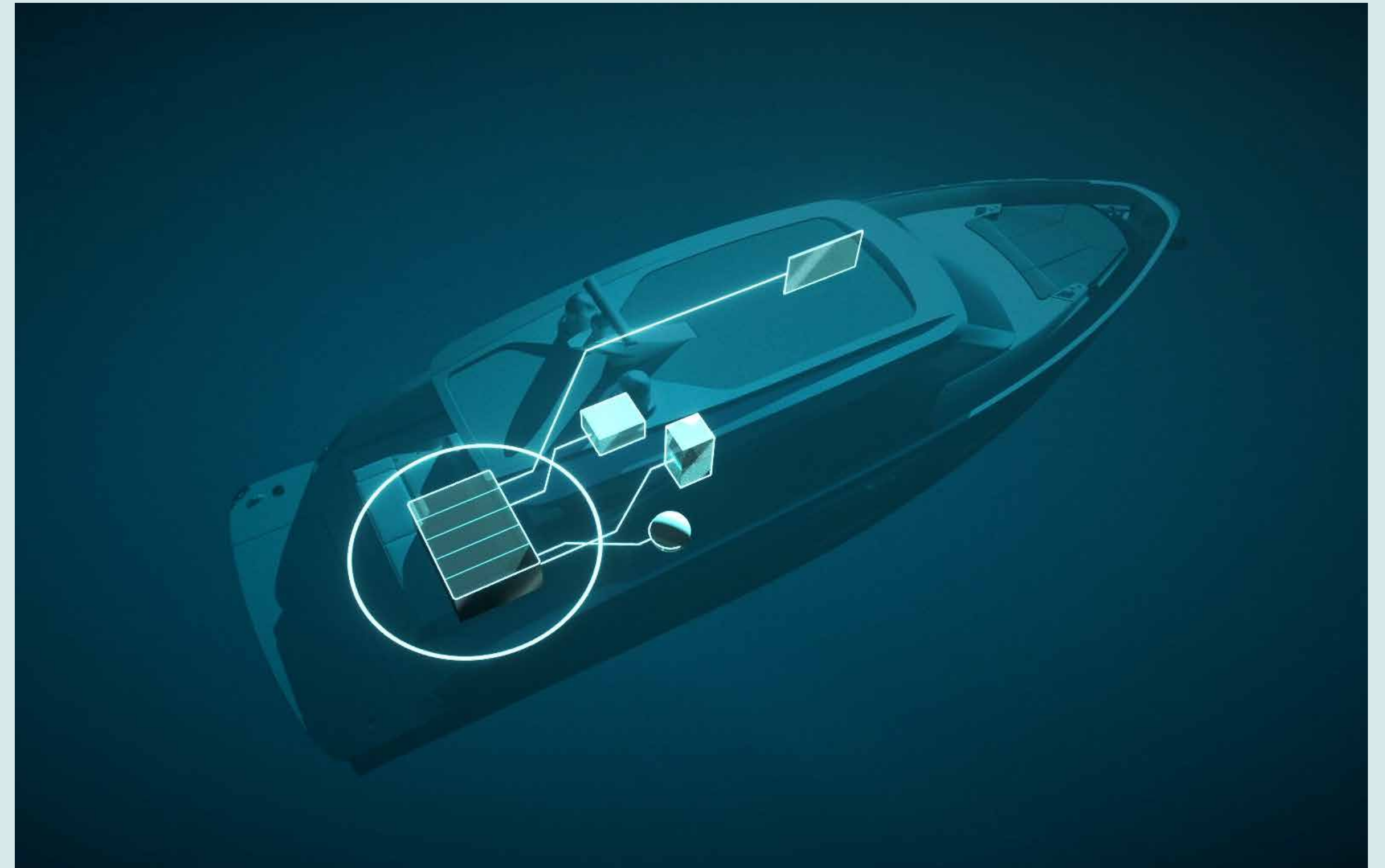
The new propulsion system, synergizing with bow-to-stern optimizations by the shipyard, delivers unparalleled efficiency. In one year of average use by a conscious owner, a reduction in CO₂ emissions of 40% is achievable.

At the same time, guests are able to appreciate an immersive experience of the sea, with reduced engine noise and vibration for quiet or completely silent operation - not only at anchor, using the battery to supply the hotel load, but also for short distance navigation in full electric.



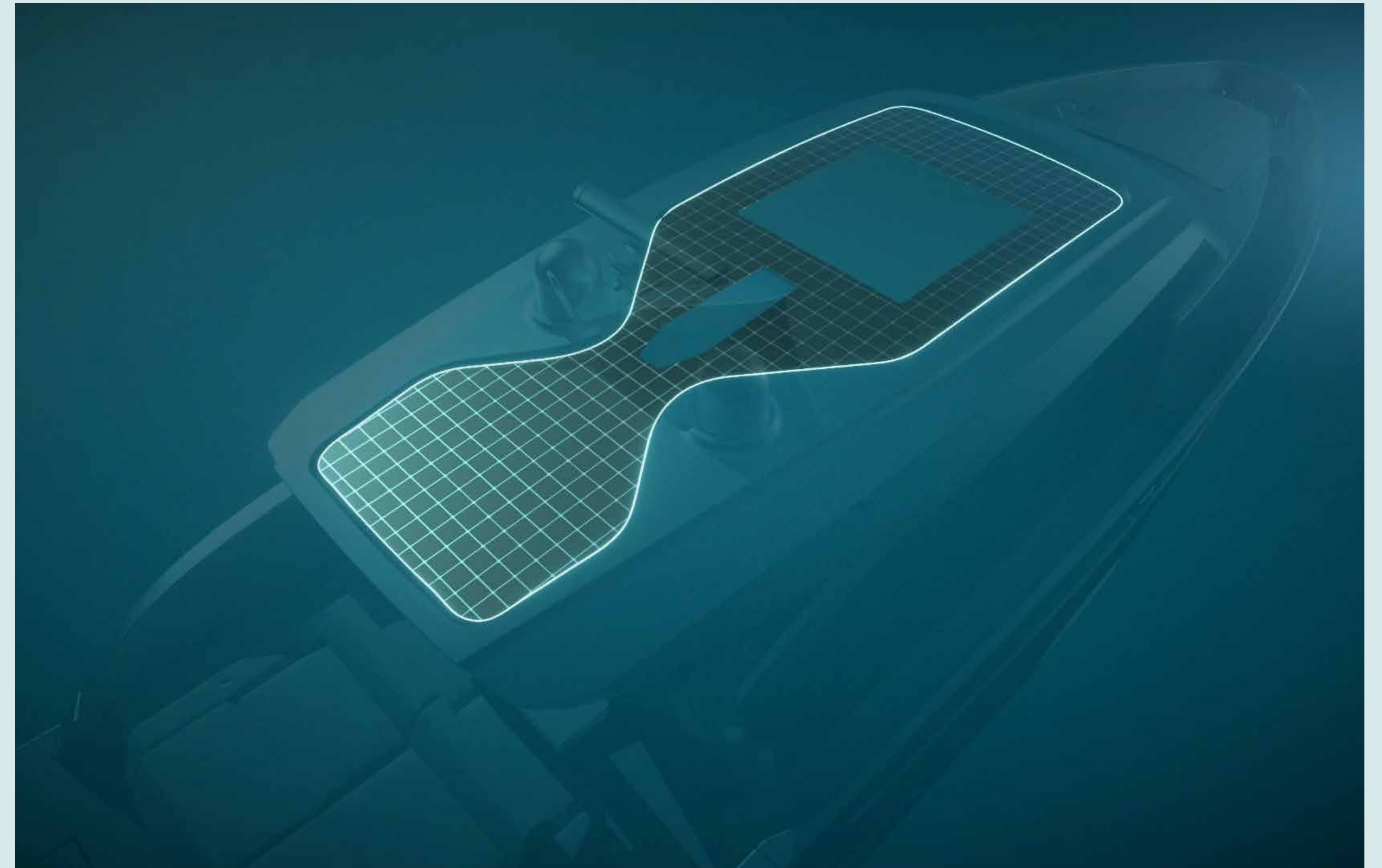
ZERO EMISSION HOTEL MODE

A battery pack can support the yacht's hotel load for up to 4 hours during the day and up to 8 hours at night. Now, it's possible to enjoy the full superyacht experience without the noise, vibration and emissions of the generators, making daytime activities more pleasant and night time relaxation more peaceful. When the ECO mode is active, the system automatically maximizes the duration of the batteries by regulation the loads on board to optimizing consumption.



RENEWABLE ENERGY

The Seadeck 6 can be equipped with 10 square meters solar panels installed on the deckhouse, resulting in a total power of 1410Wp. The energy generated by the solar panels contributes to charging the battery pack, lowering CO₂ emissions even further.



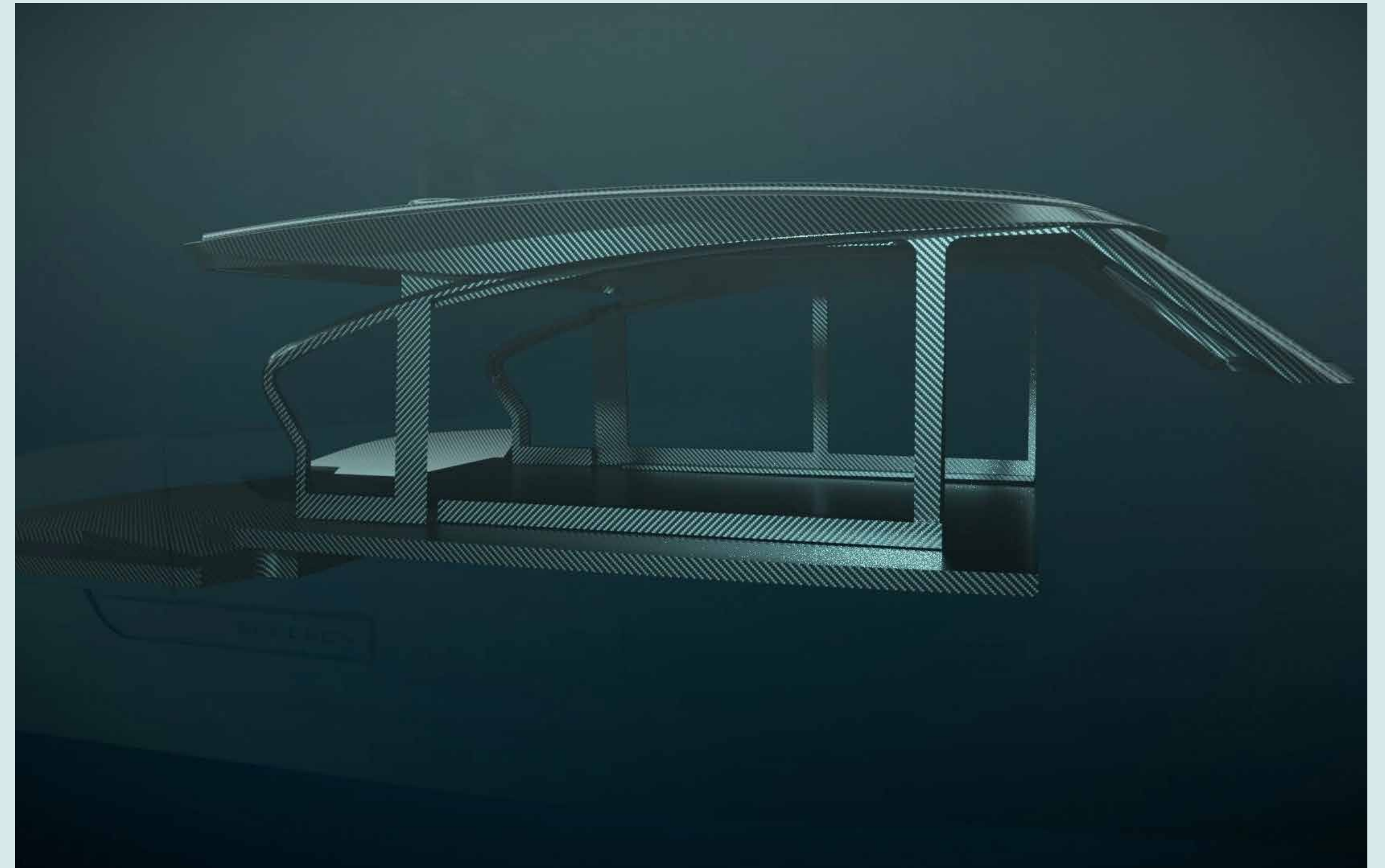
ADVANCED HULL DESIGN

The collaboration between NAMES and Azimut's R&D Department pushes the forefront of innovation, designing customized hulls for each Series with sector's most sophisticated methodology. In comparison with standard planing hulls optimized for POD propulsion, the hull of the Seadeck 6 is wider at the stern and more streamlined at the bow, allowing it to begin hydroplaning and therefore reducing drag at lower speeds. This advanced solution broadens the speed range at which the Seadeck 6 can navigate at peak efficiency.



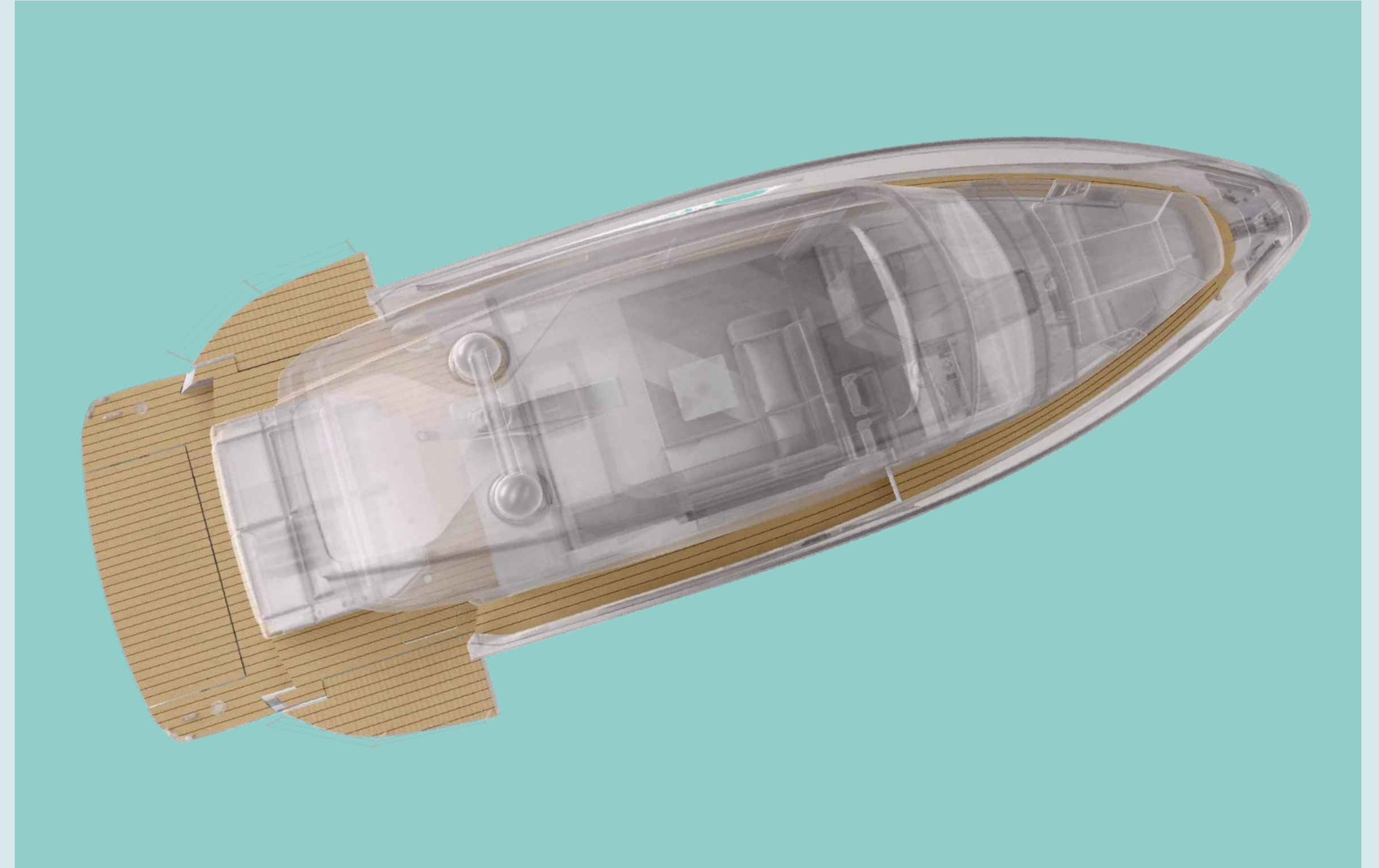
UNPRECEDENTED USE OF CARBON FIBER

Azimut's pioneering use of carbon fiber extends beyond pure performance. For the first time ever, up to 40% of the Seadeck 6's surface is laminated with carbon fiber, which lightens those parts by up to 30%, allowing for an unparalleled optimization of consumption and CO₂ emissions.



CORK DECKING

The Seadeck 6 features an innovative decking solution made entirely of cork, a sustainable material which, unlike traditional teak, can be harvested without damaging the tree and regrows over time. Cork's mechanical properties perfectly fit the Seadeck philosophy, with a combination of natural texture, heat and noise insulation, and light weight (40% less than teak).



ECO-CONSCIOUS BY NATURE

HONEY OAK



This essence is FSC certified. It is wood from responsibly managed forests and in accordance with rigorous environmental, social and economic standards.

ECO-LEATHER

The Eco-Leathers are made of recycled polyester.

PET AND ECONYL

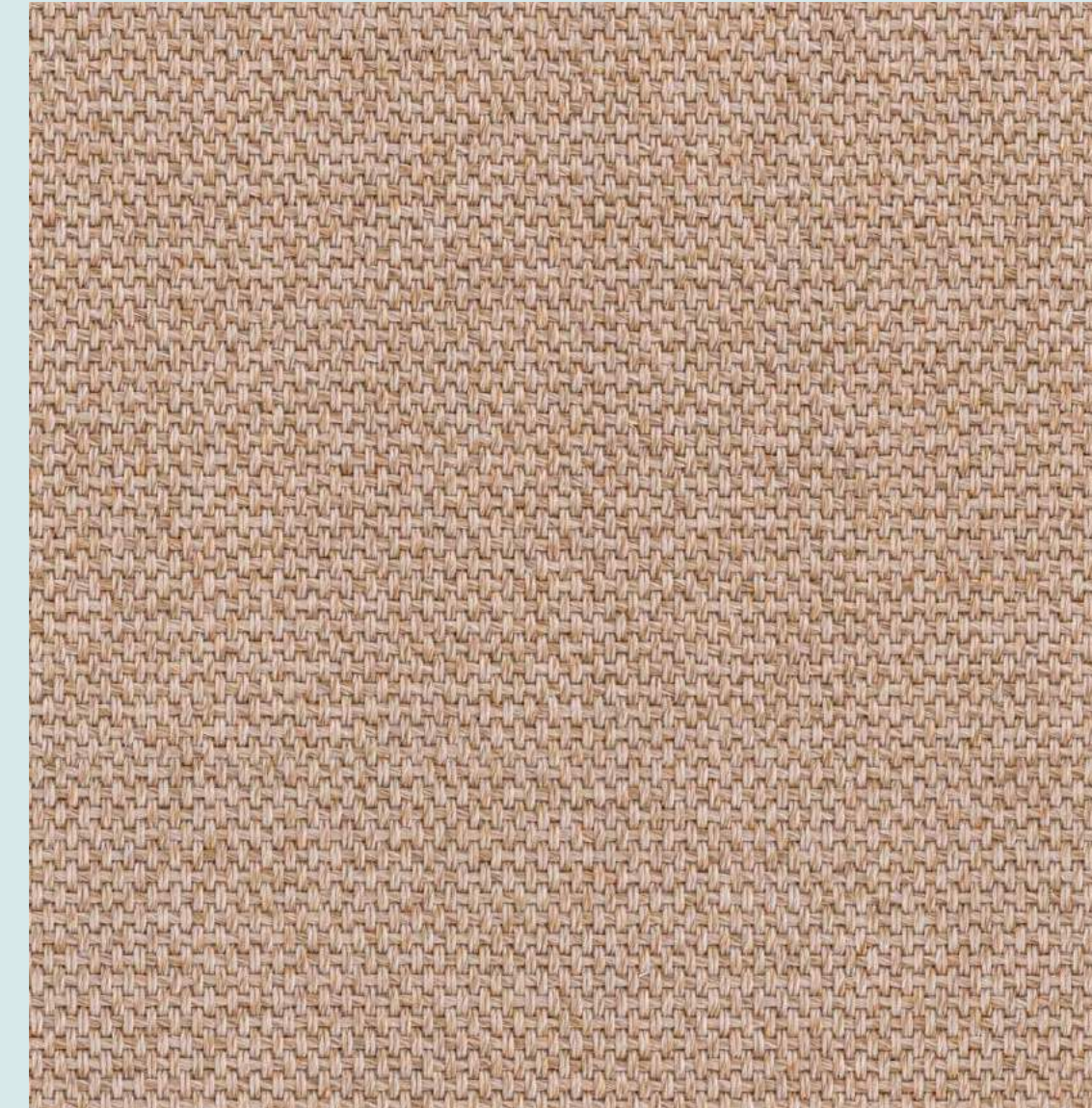
The PET carpet is made of 100% recycled PET.
The Econyl carpet is obtained from regenerated nylon which gives the possibility of being recycled an indefinite number of times.

LAPITEC

The kitchen top is made of ecological Lapitec. It does not release any substance into the environment in which it is placed and the life cycle of the product is reversible: the material can be destroyed and pulverized – returning raw material – and reused to restart the production process.

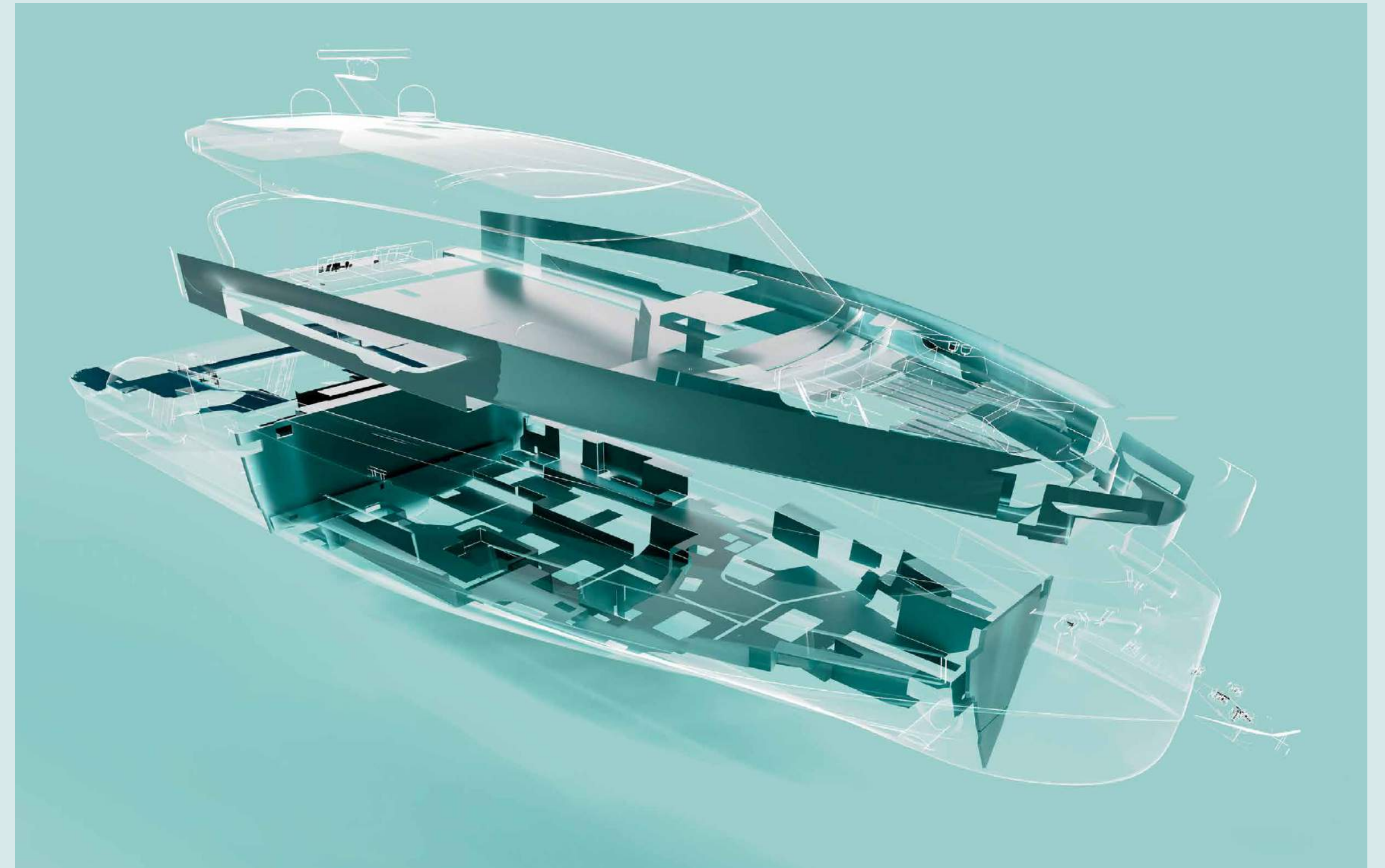
LIBECCIO

Outdoor cushions are made of recycled UV polyester.



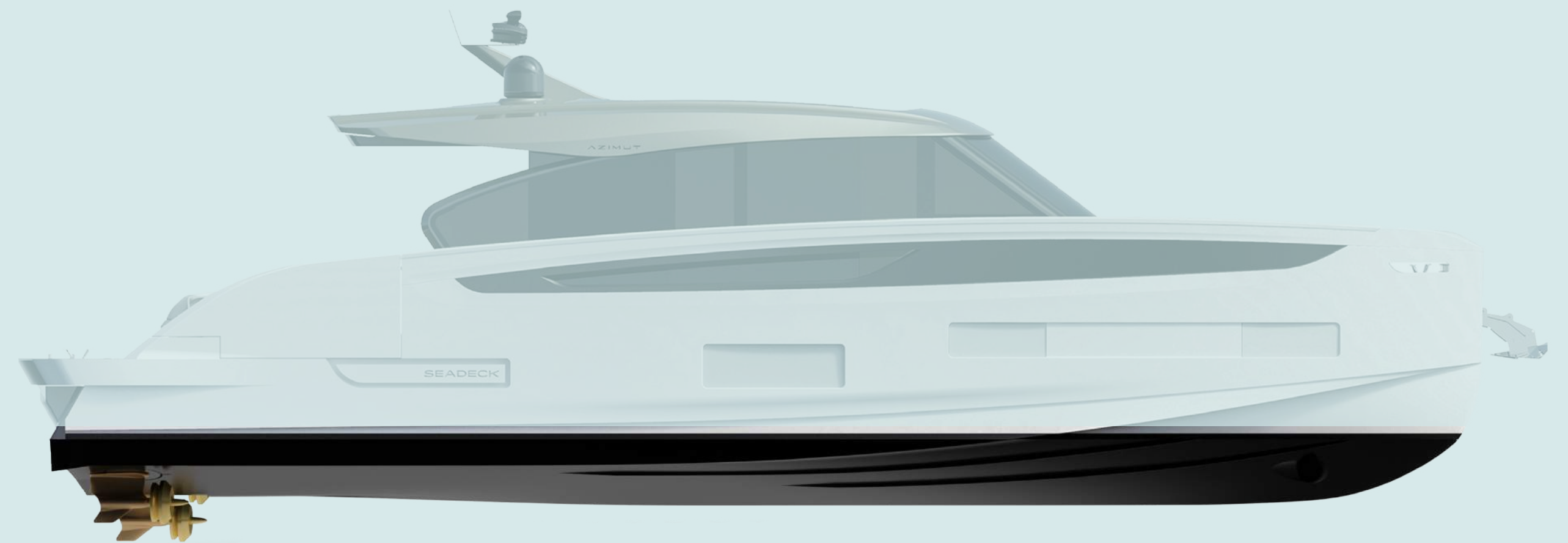
RECYCLED PET

For the first time, Azimut has committed to using PET to replace PVC, reducing the amount of new plastic needed. PET, a recycled material that comes from plastic bottles, makes up 30% of the total structure of Seadeck yachts. It is infused into all the bulkheads, floors and 75% of the inner deck equivalent to 15,000 plastic bottles recycled for each boat produced.



ANTIFOULING

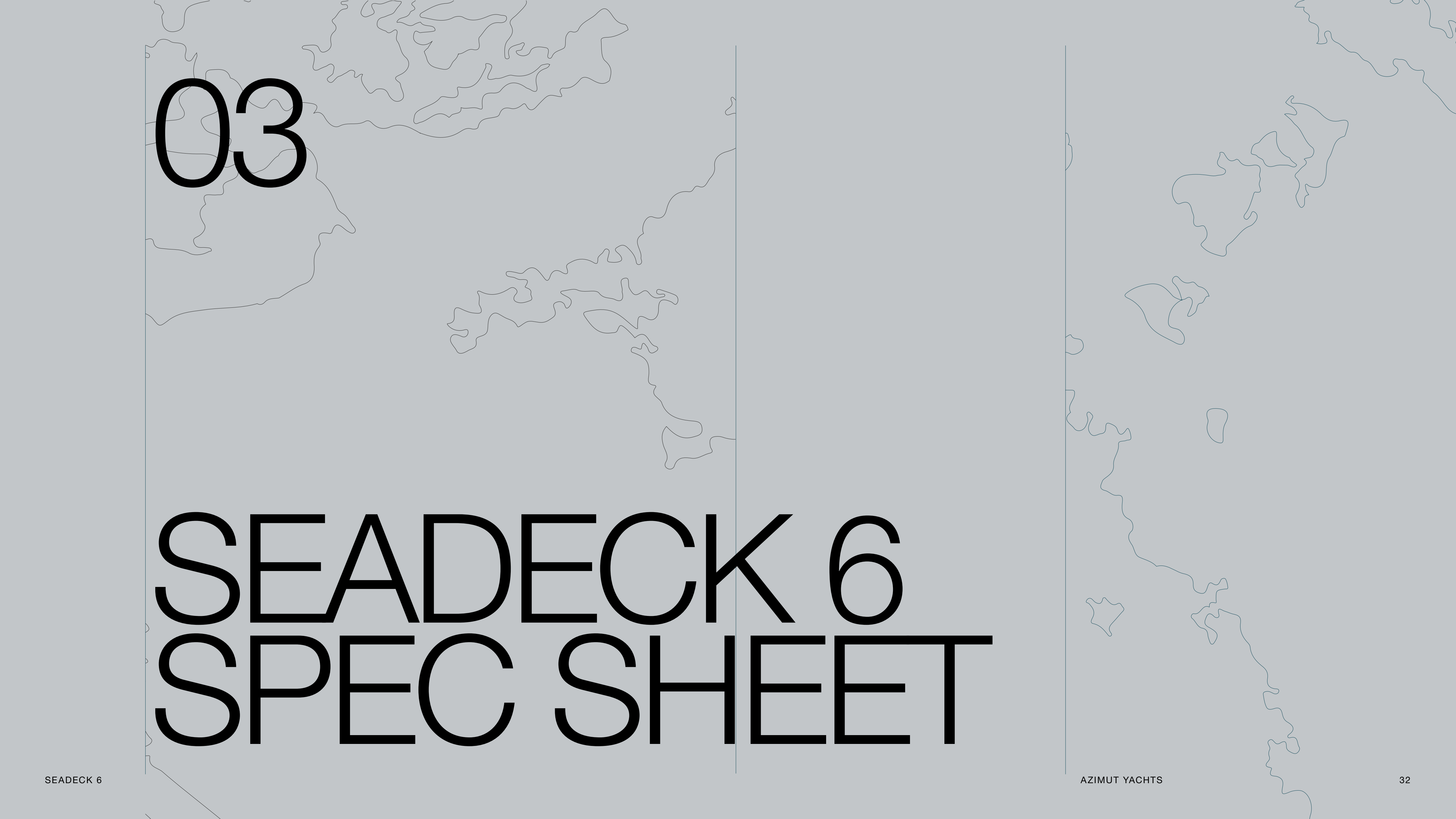
Azimut has completed over 20 months of study and analysis with over 20 products tested on 4 different models. The antifouling is 100% biocide free and provides up to 9% fuel savings and CO₂ emissions reduction compared to conventional antifouling coatings. Due to its ultra-smooth, low-friction surface, it delivers excellent in-service performance with 1.2% speed loss throughout the docking cycle.



RINA GREEN PLUS CERTIFICATION

Persistent investment in the research and implementation of advanced technologies and sustainable materials has allowed the Seadeck Series to be the shipyard's first to obtain the RINA GREEN PLUS GOLD class certification for its environmental performance, even in its standard configuration.





03

SEADECK 6 SPEC SHEET

GENERAL CHARACTERISTICS

LENGTH OVERALL	17,5 m	57' 5"
BEAM MAX	5,05 m	16' 7"
DISPLACEMENT	27,6 t	60850 lb
ENGINES	3 x Volvo IPS 500 (380 hp) 3 x Volvo IPS 650 (480 hp)	
MAXIMUM SPEED	up to 33 kn	
CRUISING SPEED	up to 24 kn	
FUEL CAPACITY	2400 l	634 US Gal
FRESH WATER CAPACITY	590 l	155,9 US Gal
CABINS	3 + 1 crew	
HEAD COMPARTMENTS	2 + 1 crew	
BUILDING MATERIAL	Carbon fibre + GRP	
INTERIOR STYLE AND DECOR	Matteo Thun & Antonio Rodriguez	
EXTERIOR DESIGN AND CONCEPT INTERIOR	Alberto Mancini	
HULL DESIGN	In collaboration with NAMES & Azimut R&D Dept.	
BUILDER	Azimut Yachts	

Last updated 03.2024

Please consult your dealer for the latest specifications.

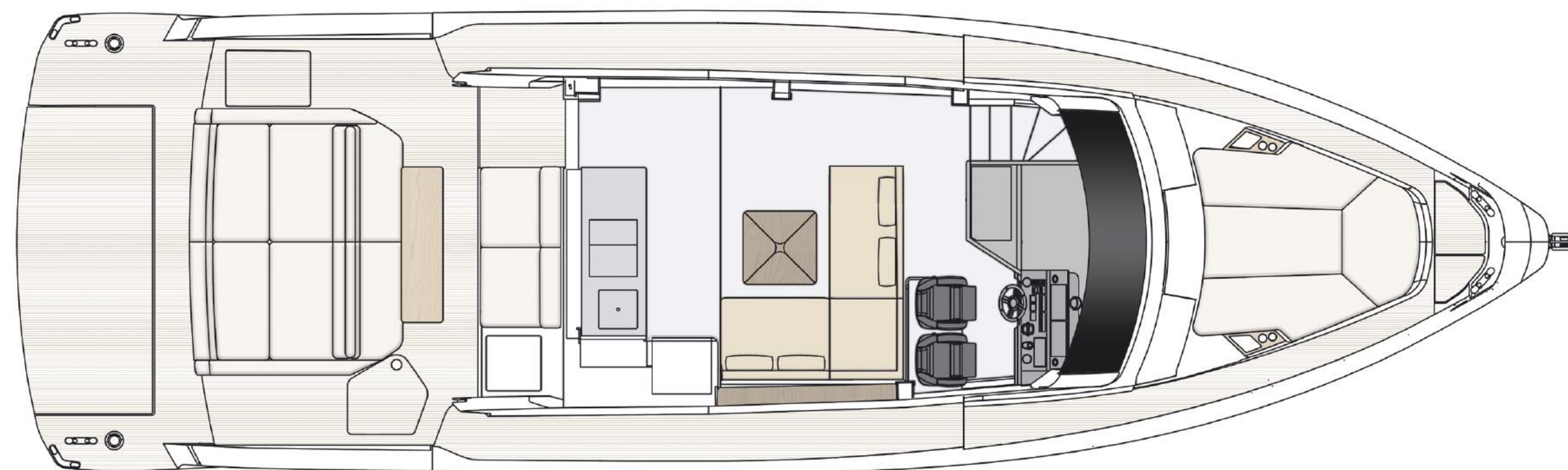
UNI ISO 8666

The performance described applies to a vessel with standard configuration (standard equipment installed) and a clean hull, propellers, and rudder. It is also noted that the performance described was recorded under favourable sea and wind conditions (Beaufort scale index 1, Douglas scale index 1); different and worse sea conditions could significantly impact performance.

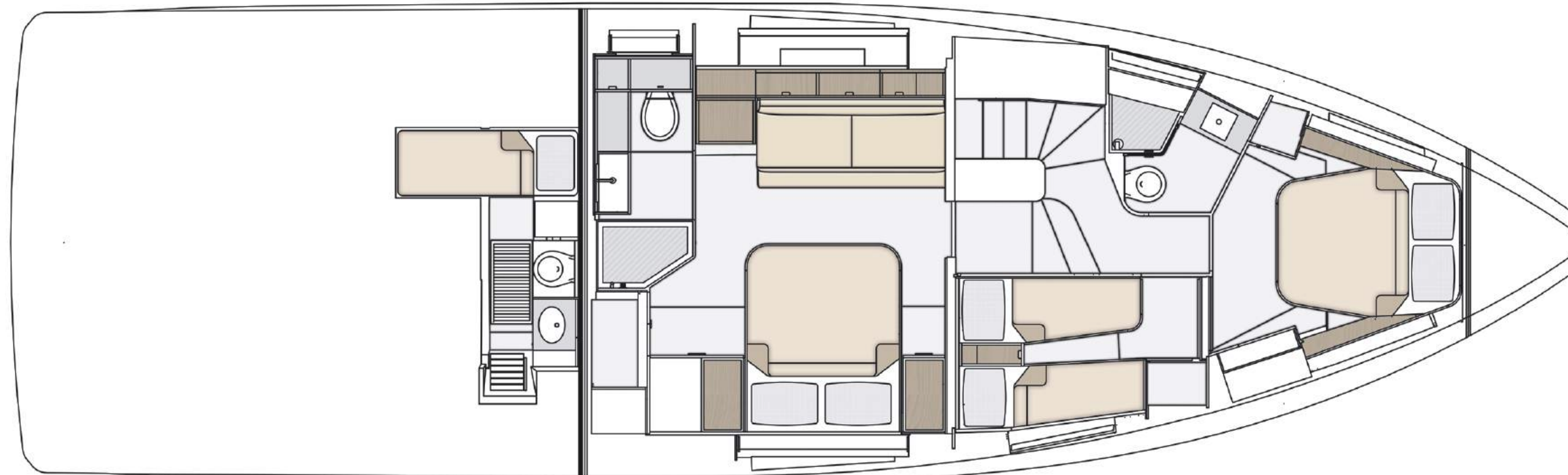
CE MARK

Given the continual evolution of technology, Azimut | Benetti S.p.A reserves the right to modify the technical specifications on its vessels at any time and without prior notice.

MAIN DECK



LOWER DECK





PRELIMINARY PROJECT PRESENTATION
SEADECK 6

RELEASE 01.24

This brochure in no way constitutes a contract of sale for the boatyard's vessels to any person or company. All information contained herein, including but not limited to technical and performance data, illustrations, and drawings, is non-binding and for purposes of illustration only. The information in this brochure refers to the boatyard's standard motoryacht models available as of the date of publication. Technical and descriptive information is valid only to the extent that it pertains to the specific vessel that is the subject of a purchase. Contract terms are valid only to the extent that they are contained in a contract of sale. This document is based on information available at the time of publication. Despite efforts to ensure the greatest possible accuracy, the information contained herein may fail to cover all details, omit technical or commercial changes that may have been made subsequent to publication, describe features that are not present, and fail to envisage all circumstances that might occur. Any illustrations, photographs, diagrams and examples shown in this brochure are included solely for the purposes of illustrating the text. Due to the different features of each vessel, the boatyard assumes no liability for actual use based on the illustrated applications.

AZIMUT

azimutyachts.com

