

# Beneteau Flyer 9 Sundeck

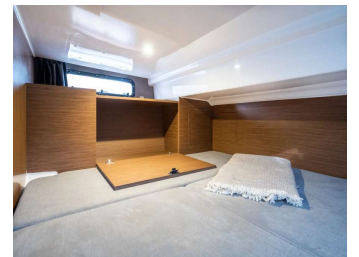
£165,000

 New

 2023

 29.89 ft

 Surrey, UK



## Details

**Condition:** New  
**Year:** 2023  
**Boat Type:** Power  
**Fuel Type:** Petrol  
**Tax Status:** Pricing inc. VAT (Tax Paid)  
**ID / Stock:** 467015

**Manufacturer:** Beneteau  
**Model:** Flyer 9 Sundeck  
**Length:** 29.89 ft  
**Location:** Surrey UK  
**Hull Material:** fiberglass

### Bates Wharf Marine Sales Ltd

**BATES/WHARF**

3A Harbour Quay, Sovereign Yacht Harbour  
01323 470066  
boatsales@bateswharf.co.uk  
www.bateswharf.co.uk

## Description

Discover the perfect blend of style and functionality with the Beneteau Flyer 9 Sundeck. This exceptional boat boasts a spacious sundeck for soaking up the sun, a comfortable and modern interior, and advanced navigation features for a smooth and enjoyable ride. Whether you're out for a day of adventure or a relaxing cruise, the Flyer 9 Sundeck offers unmatched versatility and performance.

## Engines

<b>Engine Quantity:</b>	2	<b>Total Power:</b>	250 hp
<b>Engine Make:</b>	Mercury	<b>Engine Model:</b>	V250 AMDS

## Measurements

<b>Length:</b>	29.89ft / 9.12m	<b>Length at Waterline:</b>	26.22ft / 8m
<b>Beam:</b>	9.91ft / 3.03m	<b>Displacement:</b>	3350
<b>Passenger Capacity:</b>	10	<b>Total Cabins:</b>	2
<b>Double Berths:</b>	2		

## Features

Discover the perfect blend of style and functionality with the Beneteau Flyer 9 Sundeck. This exceptional boat boasts a spacious sundeck for soaking up the sun, a comfortable and modern interior, and advanced navigation features for a smooth and enjoyable ride. Whether you're out for a day of adventure or a relaxing cruise, the Flyer 9 Sundeck offers unmatched versatility and performance. Elevate your boating experience with the Beneteau Flyer 9 Sundeck—where every journey becomes an unforgettable escape.

This Beneteau Flyer 9 Sundeck is to be fitted with 2x Mercury 250hp outboard engines.

Ample seating in the cockpit for 6-8 persons and includes the fold down hull side to create a larger more spacious cockpit and swimming platform. Walk around deck areas lead to a spacious sunbathing pad on the bow. An excellent family cruiser with berths for 4 and a separate head compartment.

Inventory includes:

Comfort Pack: Electric windlass, bathing platform, 65 litre fridge to cabin, interior sink with mixer tap, 25L 240V water heater, 220v circuit with shore power and battery charger, Outdoor gas hob, Indoor shower in heads compartment.

Upgraded electronics pack: Garmin 12" MFD with Garmin transducer

Sound Pack: Fusion MS-R07N with 4 speakers

Elegance upholstery upgrade

Mooring and anchoring kit

Console and leaning post cover.

Bow sunpad cover

Graphite coloured cockpit bimini

Wake board water skiing mast

LED lights in cockpit

Bowthruster

Additional fridge 49 litre in cockpit

2x 288 litre fuel tank upgrade  
Zipwake automatic trim tabs  
Pre rigging for Mercury engines  
Garmin 215 vhf  
Delivery & commissioning

Disclaimer: The Company offers the details of this vessel in good faith but cannot guarantee or warrant the accuracy of this information nor warrant the condition of the vessel. A buyer should instruct his agents, or his surveyors, to investigate such details as the buyer desires validated. This vessel is offered subject to prior sale, price change, or withdrawal without notice.



