

Dehler 37CWS

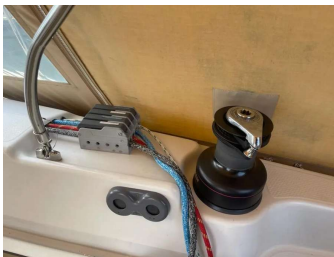
£61,950

Used

1997

36.72 ft

Eastbourne, UK



Details

Condition: Used
Year: 1997
Boat Type: Sail
Fuel Type: diesel
Tax Status: Pricing inc. VAT (Tax Paid)
ID / Stock: 406379

Manufacturer: Dehler
Model: 37CWS
Length: 36.72 ft
Location: Eastbourne UK
Hull Material: grp

Bates Wharf Marine Sales Ltd

BATES/WHARF

3A Harbour Quay, Sovereign Yacht Harbour
01323 470066
boatsales@bateswharf.co.uk
www.bateswharf.co.uk

Description

1997 model Dehler 37CWS sail cruiser with Yanmar 3GM30F 27hp diesel engine. A well equipped and well maintained example of this popular cruiser.

Engines

Engine Quantity:	1	Total Power:	27 hp
Engine Make:	Yanmar	Engine Model:	3GM30F

Measurements

Length:	36.72ft / 11.2m	Length at Waterline:	29.5ft / 9m
Beam:	11.39ft / 3.48m	Ballast:	2400
Double Berths:	2		

Features

1997 model Dehler 37CWS sail cruiser with Yanmar 3GM30F 27hp diesel engine. A well equipped and well maintained example of this popular cruiser.

Maintenance includes new standing rig 2022, keel bolts checked 2014, keel joint replaced 2022, cutlass bearing 2020, bronze fittings 2018. Antifouled and engine service completed on an annual basis. Lying in the water at Sovereign Harbour. A beautiful boat!

BUILDERS

Dehler Yachts, Germany
Designed by Van de Stadt
Year 1997

CONSTRUCTION

GRP Hull, Deck & Superstructure

SPECIFICATIONS

LOA 11.2m LWL 9.0m Beam 3.5m
Draught (Fin Keel) 1.8m
Displacement 5600kg
Ballast 2400kg
Mainsail 40m²
High aspect furling jib 26m²
Gennaker 101m²
Height of mast above WL 16.65m
Water tank 240L
Diesel tank 105L

Holding tank 40L

BATTERIES

Service 2 x 140ah Exide ES1600 Gel (New 2017 - Previous gel batteries were 20 years old when changed and were still OK!)

Engine 1 x 43ah (New 2021)

Sterling Battery Charger / Power Supply

Gas (Camping Gaz)

ENGINE

Inboard diesel Yanmar 3GM30F 27HP

Engine Hours 1600

Standard specification F = dual circuit cooling Gearbox KM series, Mechanical Cone Clutch

3 Blade Feathering Propeller shaft driven

All new fuel hoses and primary filter in 2013 after tank was removed and steam cleaned

Heat Exchanger removed and cleaned 2021

Thermostat removed and tested 2021

New Exhaust Elbow 2019

SAILS & SPARS

Sloop 7/8 Rig

2022 - All Standing Rigging replaced with new and all components on mast removed and refitted

Fully battened mainsail last cleaned, inspected and repaired 2022

Furling Jib (New 2019)

Spare Jib - old

Gennaker with Snuffer hardly used

Echomax EM230 Radar Reflector

DECKING & EXTERIOR

Permateek to all side decks

Synthetic Teak in Cockpit (New 2020)

Bathing Platform helm seat lifts out to make a walkthrough and platform folds down

Shower by bathing platform hot and cold

Stainless Steel Fold Down Swimming Ladder

Outboard Motor Bracket

Teak Grating in Cockpit

6 x Mooring Cleats

Protective rubber rubbing strake

COCKPIT LOCKER

Fenders & Warps

CQR Anchor

Teak Cockpit Table

Anchor Buoy, Anchor Ball and Motoring Cone

ACCOMODATION & INTERIOR

Forward Cabin has enlarged double berth and large overhead hatch, two hanging lockers, side cupboards and side shelves. Large storage area and drawers under the bed. Seats either side and dressing mirror with shelf under. Aft cabin on port quarter with hanging locker, side cupboards and shelves. Large storage area under the large double berth.

Large Convertible Double Berth in Saloon. If not converted has lee cloth to be used as a single sea berth. Heads compartment with Jabsco Regular Bowl toilet, washbasin, shower, full length mirror and storage cupboards. Light Ash Interior Joinery
Folding table with drinks storage under
Gas Water Heater with Electric Immersion Heater
Eberspacher diesel cabin heater with 4 hot air outlets (New 2014)
3 Burner Gas Stove with Oven
Refrigerator front opening with Ice making facility
Twin Stainless Steel Sinks
Twin 240v socket above large work surface
Roller Blinds fitted to roof hatches and windows in saloon
Brass Clock & Barometer
Outward facing Chart Table and Seat with 240v mains power point below.
Carbon Monoxide Detector

SAFETY EQUIPMENT

Fire Extinguishers x 3 (Dry Powder, New 2021)
Fire Blanket
Danbuoy
Horseshoe Lifebuoy
Liferaft Seago 6 Man Valise. Last serviced June 2021. Purchased 2012.

INSTRUMENTATION

Raymarine C80 Plotter with Navionics Gold Software
Raymarine AIS250 Receiver
Raymarine Raystar 125 GPS Antenna
Raymarine ST60+ Wind and Close Hauled Wind Instrument (New Masthead Unit 2022)
Raymarine ST60+ Speed Instrument
Raymarine ST60+ Depth Instrument
Autohelm 6000 Autopilot
Raymarine 54E VHF DSC Radio (New Antenna 2022)
Suunto Compass
Windex Wind Vane (New 2022)

CANVAS

Sprayhood
Bimini
Full Cockpit Enclosure
Mainsail Cover and Mast Boot with Lazy Jacks (New 2022)
Foresail Cover
Wheel Cover

MISCELLANEOUS ITEMS

Boat Hook
Ensign & Staff
Shore Power Leads x 2

Spinnaker Pole

WINCHES

2 x Harken ST44 - 2 Speed Electric Primary Winches
2 x Harken ST32 - 2 Speed Manual Winches
All winches serviced with new pawls 2021
Covers for winches
Lofrans Project X2 Electric 700w Windlass with 40m
Galvanised Chain marked at 5m intervals (All 2012) with
Bruce Anchor attached
Winch Handle

DOCUMENTATION

Part 1 Registered Boat
Many manuals and information
Many receipts available

MISCELLANEOUS

Keel Bolts last checked & tightened 2014
Keel Joint Sealant replaced 2022
Cutlass Bearing replaced 2020
Underwater Bronze Skin Fittings replaced 2018
Antifouling and all necessary out of the water maintenance undertaken by Tim Nicholls on an annual basis including polishing of the hull.
All regular annual servicing of the engine done by the owner i.e. Oil, Filters, Coolant, Impeller etc. with a record being kept of this and available on board.

Disclaimer: The Company offers the details of this vessel in good faith but cannot guarantee or warrant the accuracy of this information nor warrant the condition of the vessel. A buyer should instruct his agents, or his surveyors, to investigate such details as the buyer desires validated. This vessel is offered subject to prior sale, price change, or withdrawal without notice.



